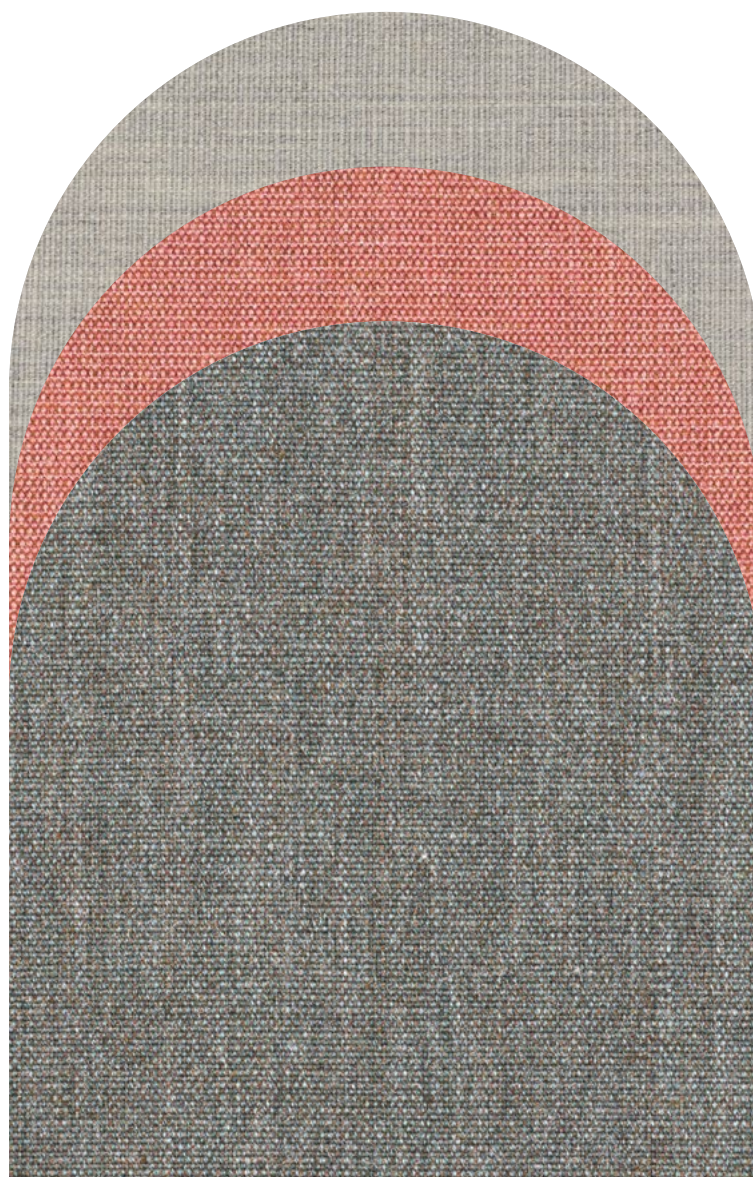


V K A
D
R A
T

CANVAS 2 | KVADRAT



COMPOSITION

90% new wool
10% nylon

**COLOUR FASTNESS
TO LIGHT**

Note 5-7
ISO 105-B02

PILLING

Note 4-5
EN ISO 12945

MARTINDALE

100.000 rubs
EN ISO 12947

FIRETEST

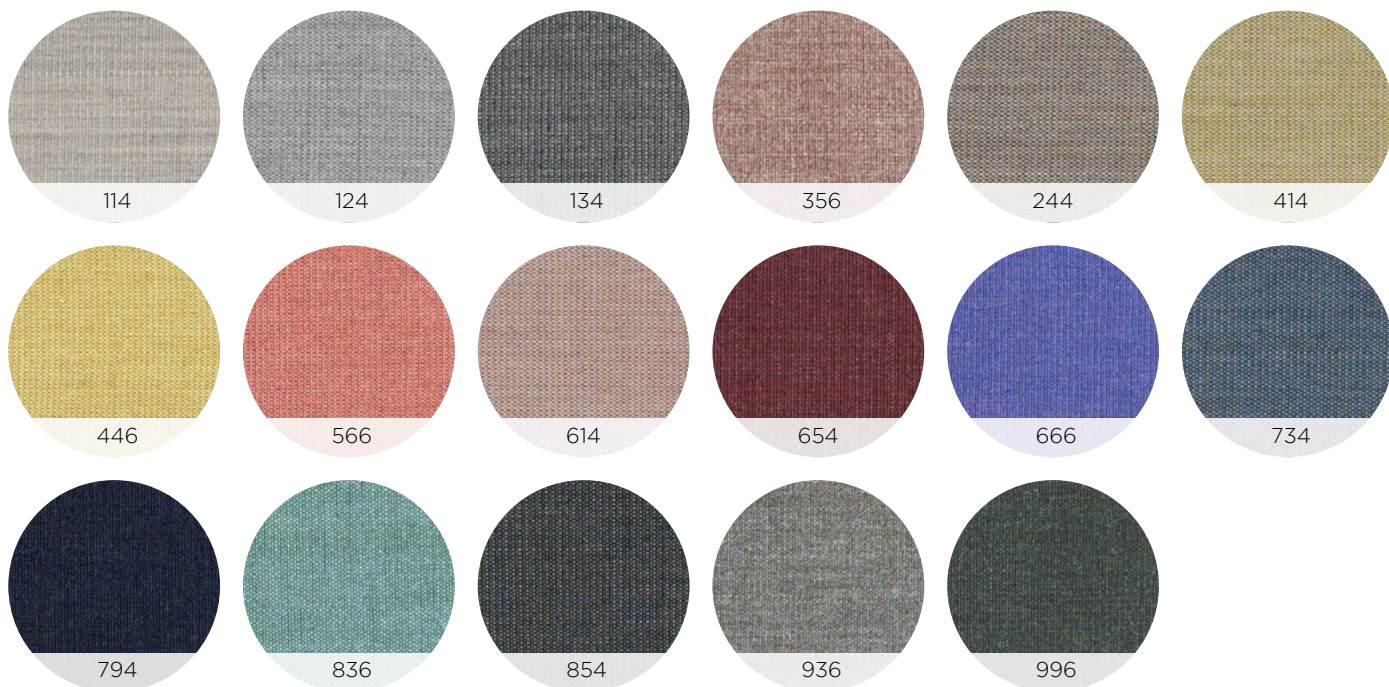
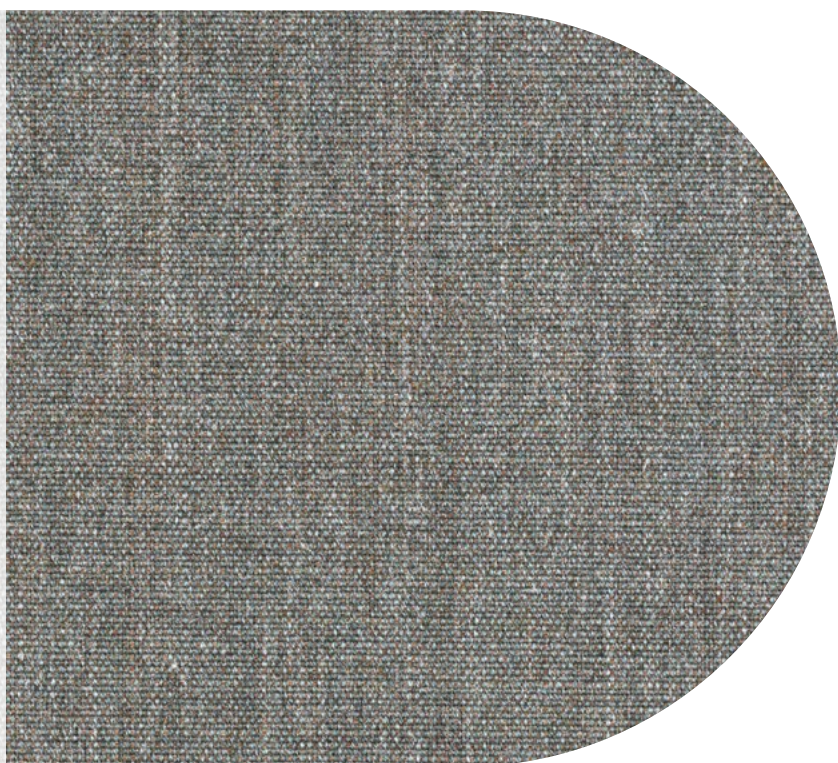
EN 1021 - 1/2; DIN 4102 B2; Önorm B1/Q1;
NF D60 013; UNI 9175 11M; IMO A.652(16);
US Cal Tech Bull 117; BS 5852 part 1;
BS 5852 ignition source 2-3

CARE

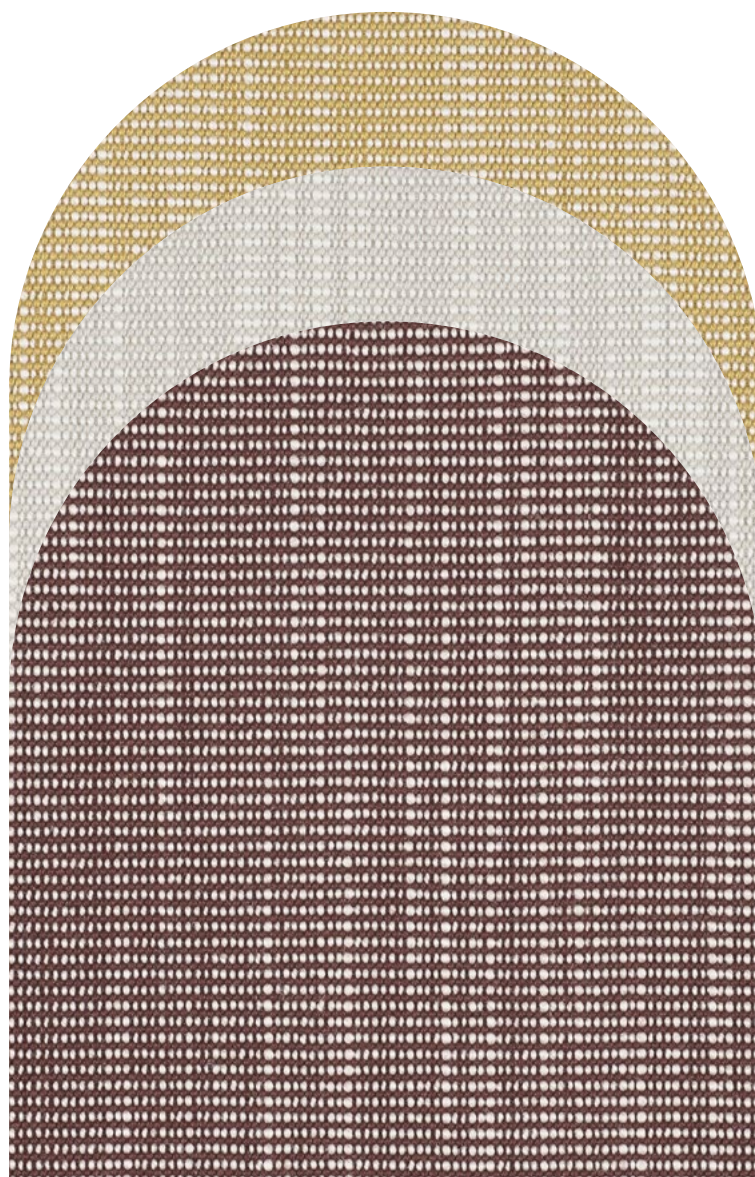


NOTES

Slight differences in colour may occur



RAAS | KVADRAT



COMPOSITION

92% new wool
8% nylon

COLOUR FASTNESS

TO LIGHT

Note 6-7
ISO 105-B02

PILLING

Note 4-5
EN ISO 12945

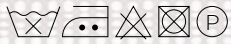
MARTINDALE

100.000 rubs
EN ISO 12947

FIRETEST

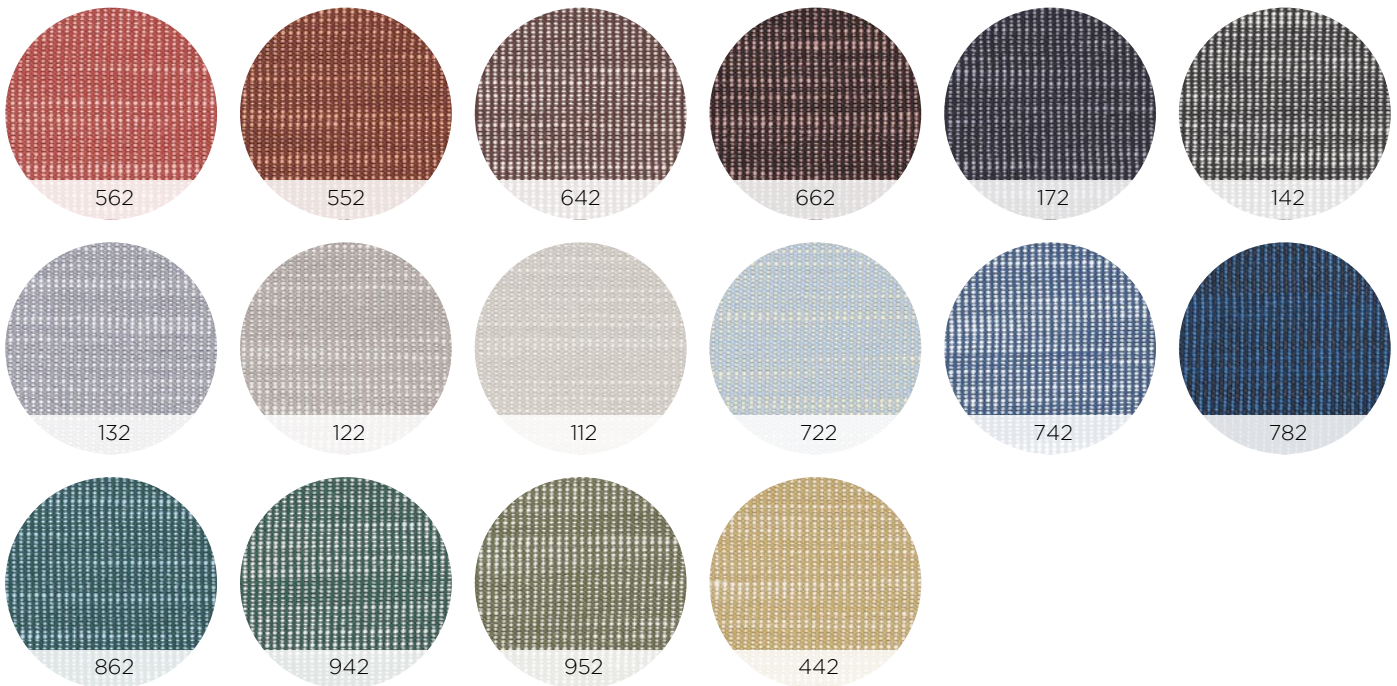
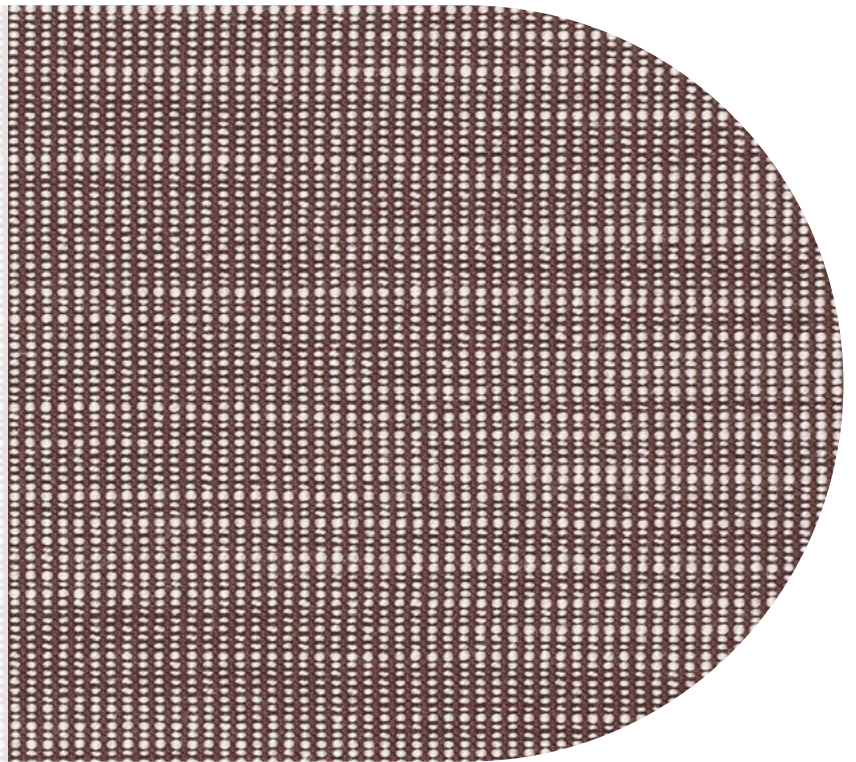
BS 5852 ignition source 3; BS 5852 part1;
EN 1021 - 1/2; Önorm B2/Q1; NF D60 013;
UNI 9175 1IM; IMO FTP code 2010: part8;
US Cal Bull 117-2013;

CARE



NOTES

Slight differences in colour may occur



SKYE | KVADRAT



COMPOSITION

90% new wool
10% nylon

**COLOUR FASTNESS
TO LIGHT**

Note 6
ISO 105-B02

PILLING

Note 4
EN ISO 12945

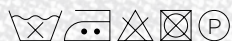
MARTINDALE

60.000 rubs
EN ISO 12947

FIRETEST

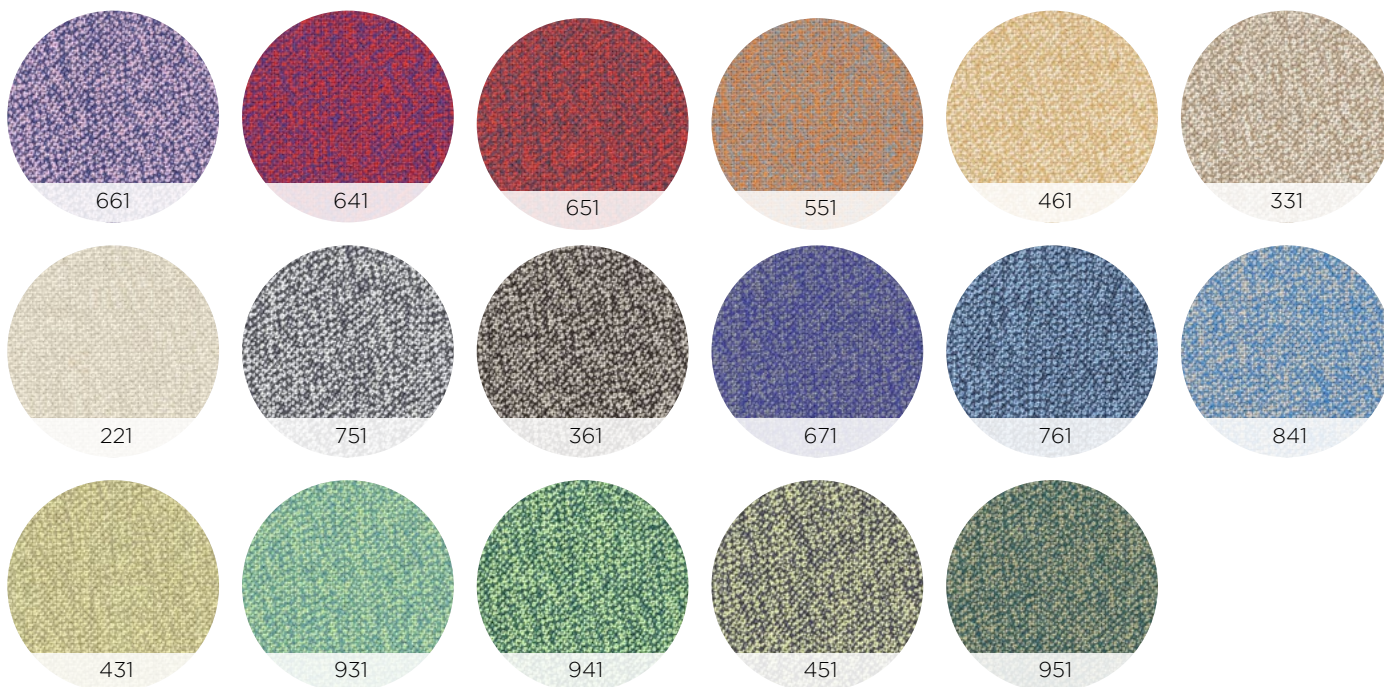
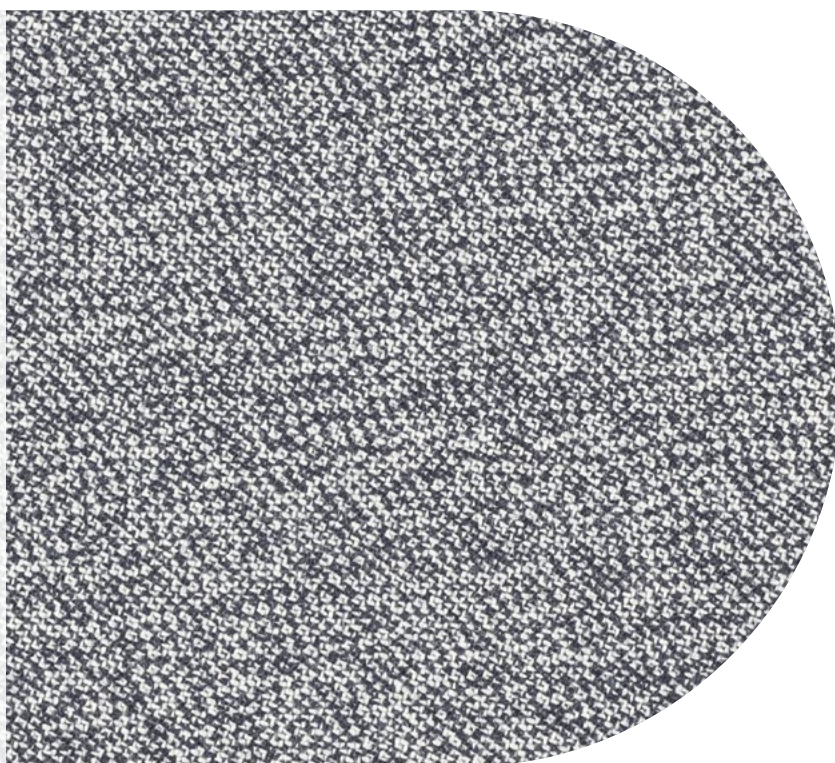
EN 1021-1/2; NF D60 013; UNI 9175 11M;
IMO FTP code 2010:part8;
US Cal Bull 117-2013; BS 5852 part1;
BS 5852 crib 5 with treatment

CARE



NOTES

Slight differences in colour may occur



bolzan