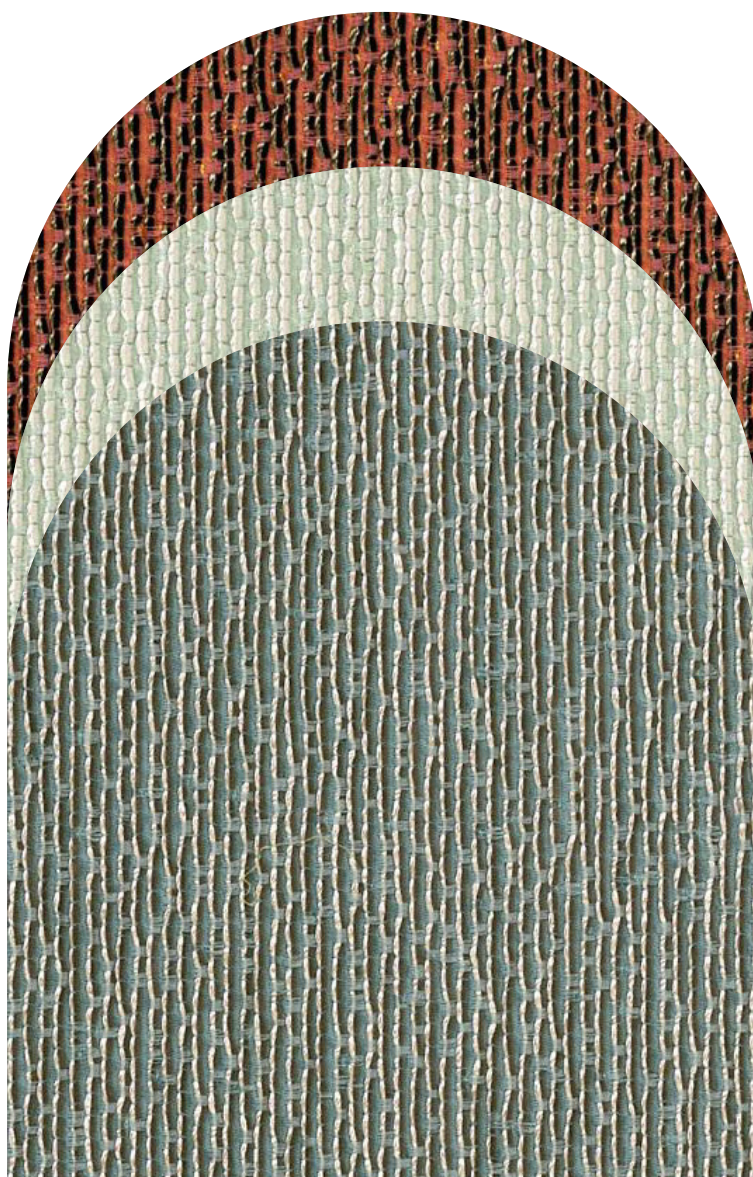


UR  
UB  
E  
L  
L

# ALMORÒ | RUBELLI



**COMPOSITION**

40% polyamide  
29% spun ryon  
29% cotton  
2% a

**COLOUR FASTNESS**

**TO LIGHT**

Note 4-5 average

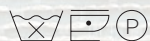
**MARTINDALE**

50.000 rubs

**FIRETEST**

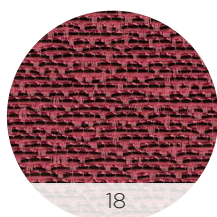
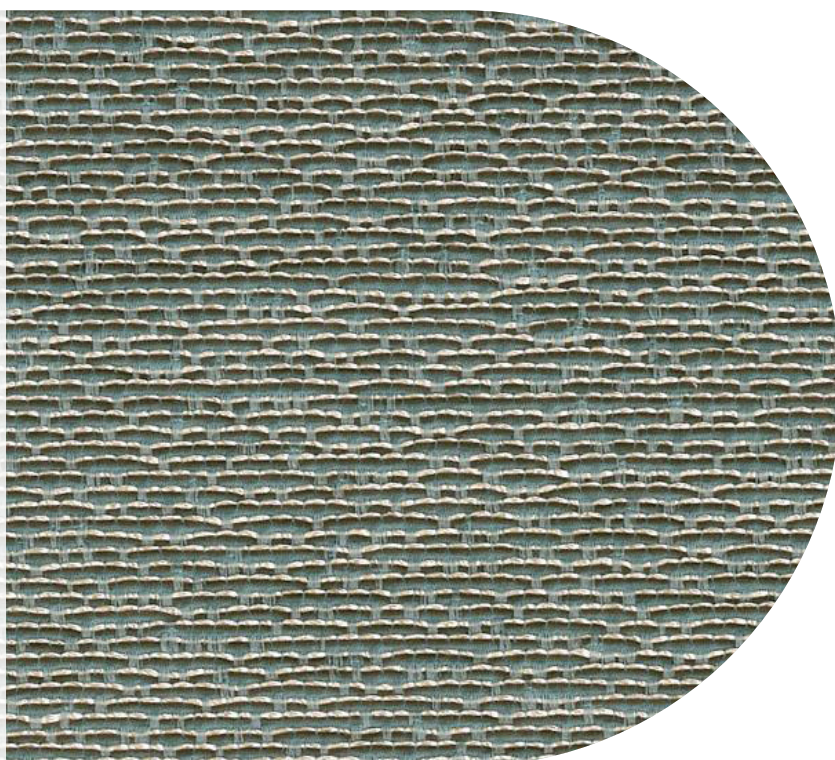
UK cigarette BS5852 source 0

**CARE**



**NOTES**

Slight differences in colour may occur



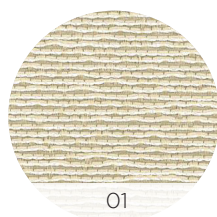
18



17



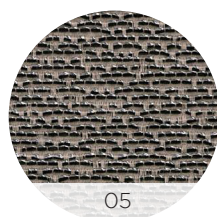
06



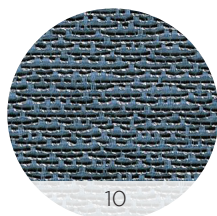
01



03



05



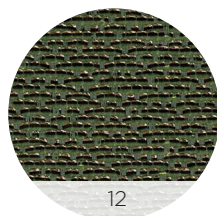
10



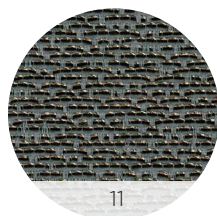
09



08



12



11

# BEAT | RUBELLI



**COMPOSITION**

100% polyester Trevira CS

**COLOUR FASTNESS**

**TO LIGHT**

Note 4-5 average

**MARTINDALE**

20.000 rubs

**EXTRA**

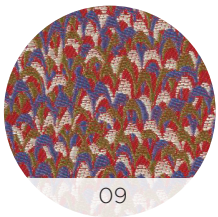
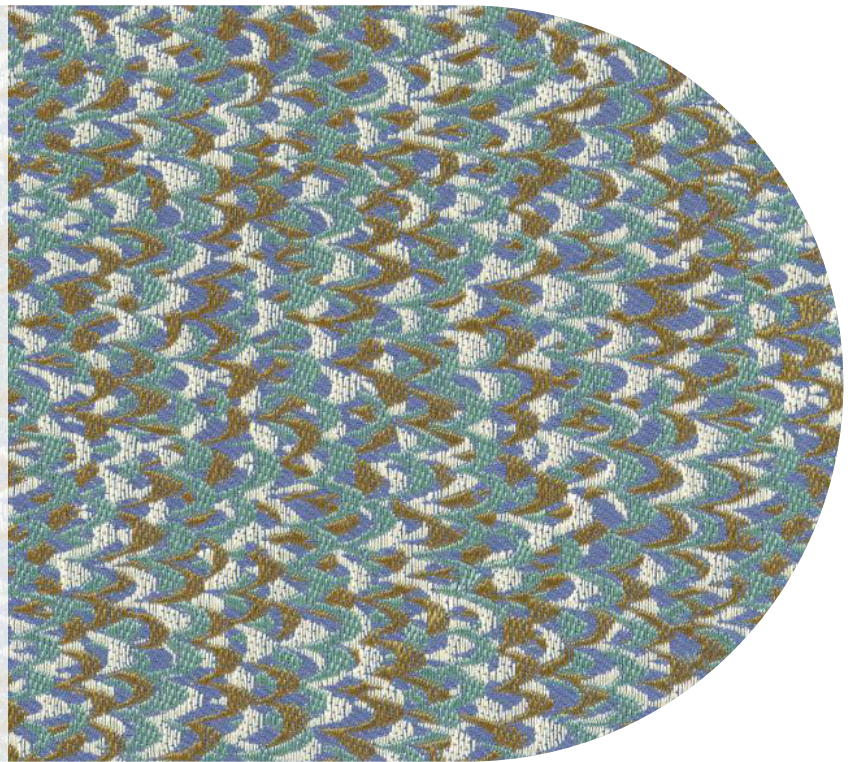
Germany B1 DIN 4102-1  
UK contract upholstery BS7176  
UK contract curtains BS5867  
Italia Classe 1 Tendaggi  
France M1  
NFP902-503-504-505  
IMO 8 upholstery

**CARE**



**NOTES**

Slight differences in colour may occur



09



10



03



01



02



04



08



06



05



07

# SONG | RUBELLI



**COMPOSITION**

56% polyester  
44% polyamide

**COLOUR FASTNESS  
TO LIGHT**

Note 4-5 average

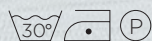
**MARTINDALE**

45.000 rubs

**FIRETEST**

UK cigarette BS5852 source 0

**CARE**



**NOTES**

Slight differences in colour may occur



**bolzan**